

# WARWICK SUNDEC®

Insure against the  
outdoor elements  
with SUNDEC.



**Front cover image:**

**Bean bag chairs:** Kona Pebble with Lomani Cloud piping

**Ottoman:** Kona Pebble (sides) with Lomani Cloud piping, Tulum Pumice (top)

**Scatters Left-Right:** Mallacoota Pumice, Tulum Ash, Mallacoota Palm, Tulum Ash (reverse side), Lomani Lime with Lomani Cloud piping

**Side Table:** Lomani Lime (top), Tulum Palm (side)

**Page 4 image:**

**Sunbeds Top-Bottom:** Bondi Ocean with Bondi Calippo scatter cushion, Bells Beach Calippo with Bondi Ocean and Mindill Calippo scatter cushions, Bells Beach Ocean with Bondi Calippo scatter cushion

**Ottomans Top-Bottom:** Mindill Calippo (sides), Kona Calippo (Top) with Kona Ash piping, Waikiki Calippo (sides), Kona Calippo (Top) with Kona Ash piping.

# WARWICK SUNDEC®

SUNDEC, the perfect fabric for all outdoor applications.

Whether in the garden, by the pool, on a boat, entertainment deck or an outdoor cafe, SUNDEC is designed to create a beautifully coordinating environment that can be effortlessly maintained no matter the conditions.

SUNDEC is a lightfast, durable and easy to clean partner for all year round indoor and outdoor decorative applications.

Developed to withstand commercial sunlight exposure requirements, mould and mildew growth, chlorine damage and general wear and tear.

If that's not enough, Warwick's SUNDEC includes water repellency and microbial hygiene protection making stylish outdoor living easier.







# What is SUNDEC?

## **Ultra Violet Resistant**

SUNDEC fabrics have excellent ultraviolet blocking agents which protect the polymer backbone of the fabric from the effects of UV radiation. SUNDEC fabrics have been tested for weathering, such as sun, rain and humidity, obtaining the UV Standard 801 certificate, 'Protect 80', meaning it is capable of blocking more than 97% UV rays.

## **Stain resistance**

SUNDEC fabrics have been carefully processed and treated to reduce the fabric absorption of soil and stains.

## **Water repellent**

SUNDEC fabrics are protected by an invisible shield around each fibre to keep the fabric dry and clean. It is a natural anti-adherent.

## **Oeko-Tex certified**

Oeko-Tex is the internationally standardised criteria directory for testing harmful substances, issued by the International Association for Research and Testing in the Field of Textile Ecology (Oeko-Tex). SUNDEC fabrics have met their rigorous international testing standards and are free of substances which might be harmful to humans and the environment.

## **Cleanability**

Due to the fabrics being woven with solution dyed olefin yarns, the fabrics can be safely cleaned. We recommend the use of reticulated foam, which is a porous low density foam, allowing water and air to flow through easily.

## **Versatile**

SUNDEC fabrics are suitable for both indoor and outdoor use, as well as both upholstery and drapery applications. Offered in a variety of designs and colours to suit your home.

## **Halo**

SUNDEC fabrics are a part of our Halo range, meaning they are easy to clean, hard wearing and, put simply, built to last. Woven to precise specifications and tested to exacting standards for colourfastness, abrasion, safety in fabrics and inherent stain resistance. Additionally, Halo fabrics are resistant to pilling and mould/mildew while impervious to attack by moths, silverfish and insect pests.

## **Environmentally Considered**

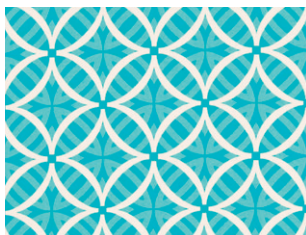
All SUNDEC fabrics are woven from 100% solution dyed olefin yarn. Solution dyeing uses a clean manufacturing process, as the colour is added before the yarn is extruded. No dye bath processes are used, eliminating waste effluents. It is also 100% recyclable.

## **Colour and Scale**

Please note the flat shots in this brochure are intended as a visual representation only. All designs are not 100% in scale and should be looked at in conjunction with the pattern repeat figures on pages 26-29. It is recommended that a cutting be requested for colour and scale prior to any placement of orders.



Coolum Turquoise



Coolum Turquoise (Reverse)



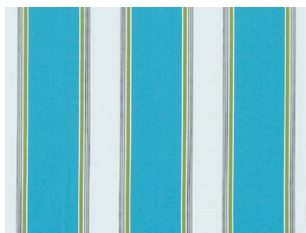
Avoca Turquoise



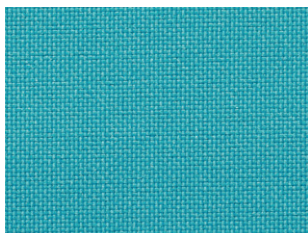
Merimbula Turquoise



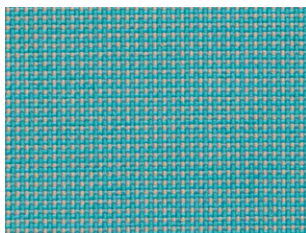
Mallacoota Turquoise



Waikiki Turquoise



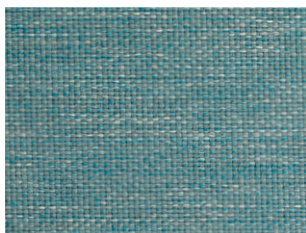
Kona Turquoise



Noosa Turquoise



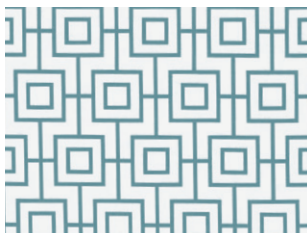
Kona Ocean



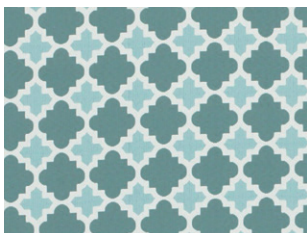
Lomani Ocean



Bondi Ocean



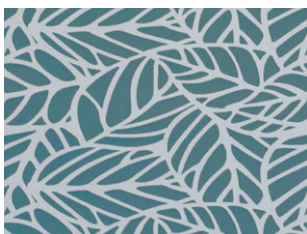
Bondi Ocean (Reverse)



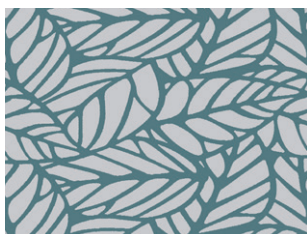
Bells Beach Ocean



Bells Beach Ocean (Reverse)



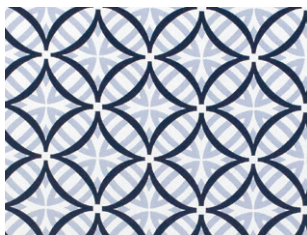
Tulum Ocean



Tulum Ocean (Reverse)



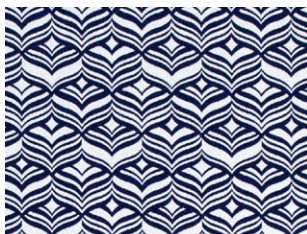
Mallacoota Ocean



Coolum Marine



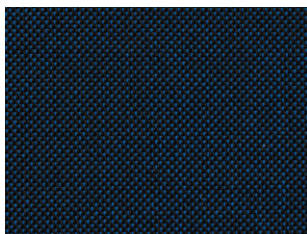
Coolum Marine (Reverse)



Avoca Marine



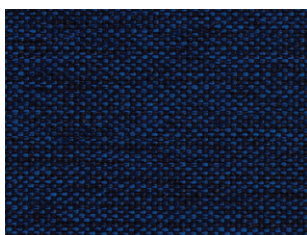
Merimbula Marine



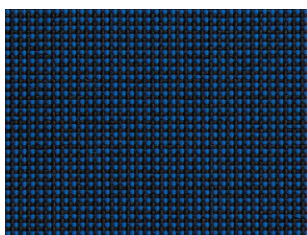
Kona Navy



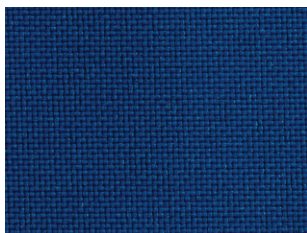
Mallacoota Marine



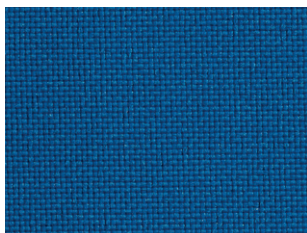
Lomani Navy



Noosa Navy

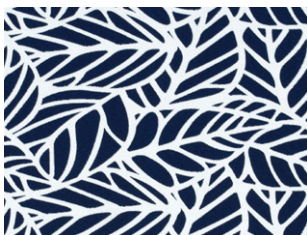


Kona Marine

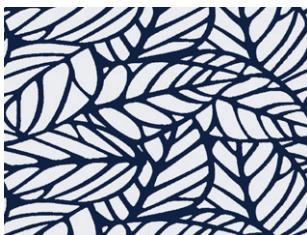


Kona Lagoon





Tulum Marine



Tulum Marine (Reverse)



Waikiki Denim



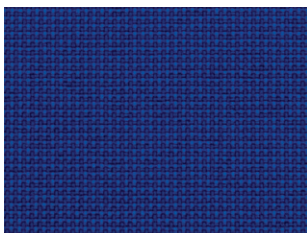
Seychelles Denim



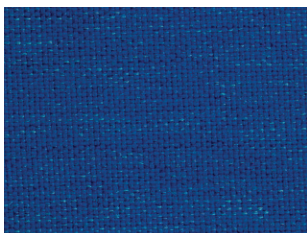
Mallacoota Cobalt



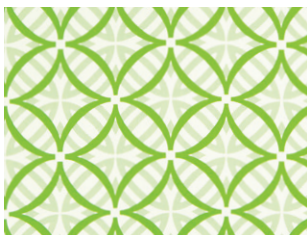
Mindill Denim



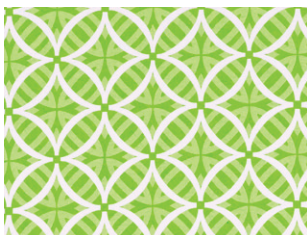
Noosa Marine



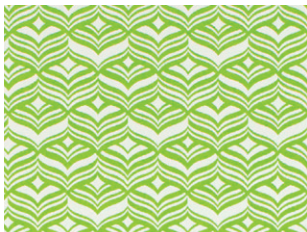
Lomani Lagoon



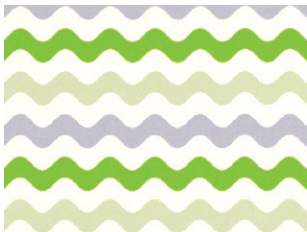
Coolum Lime



Coolum Lime (Reverse)



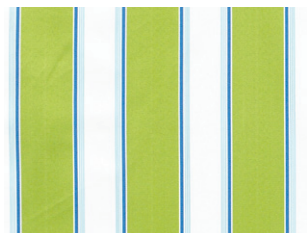
Avoca Lime



Merimbula Lime



Mindill Lime



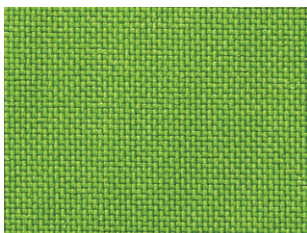
Waikiki Lime



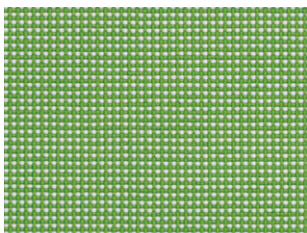
Seychelles Lime



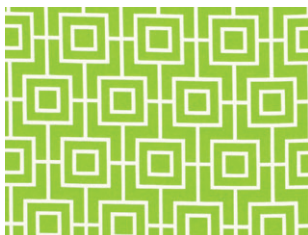
Mallacoota Lime



Kona Lime



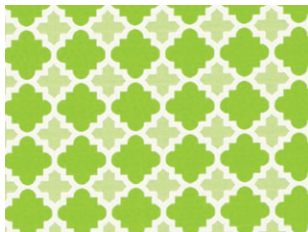
Noosa Lime



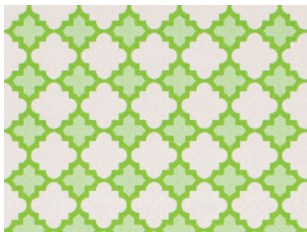
Bondi Lime



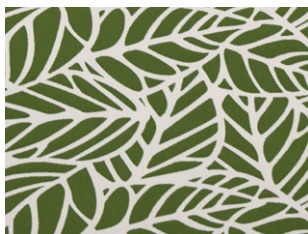
Bondi Lime (Reverse)



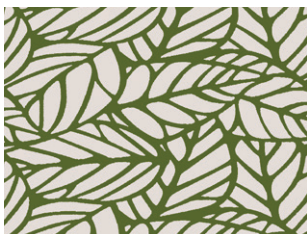
Bells Beach Lime



Bells Beach Lime (Reverse)



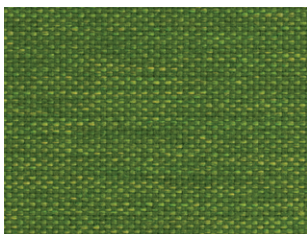
Tulum Palm



Tulum Palm (Reverse)



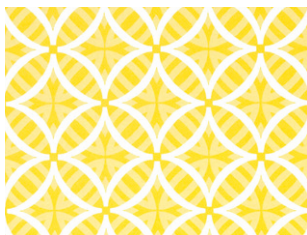
Mallacoota Palm



Lomani Lime



Coolum Sunshine



Coolum Sunshine (Reverse)



Avoca Sunshine



Merimbula Sunshine



Mindill Sunshine



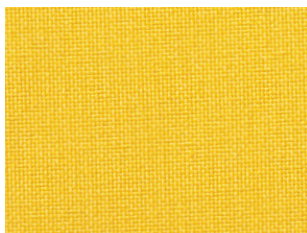
Waikiki Sunshine



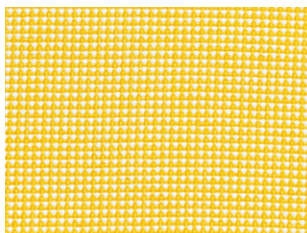
Seychelles Sunshine



Mallacoota Sunshine



Kona Sunshine



Noosa Sunshine





Bondi Sunshine



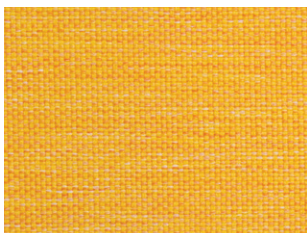
Bondi Sunshine (Reverse)



Bells Beach Sunshine



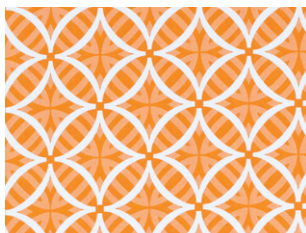
Bells Beach Sunshine  
(Reverse)



Lomani Sunshine



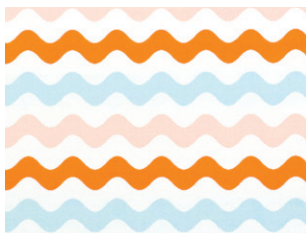
Coolum Melon



Coolum Melon (Reverse)



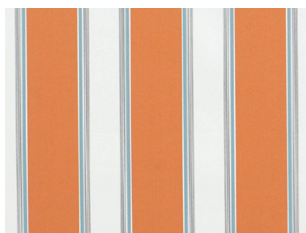
Avoca Melon



Merimbula Melon



Mindill Calippo



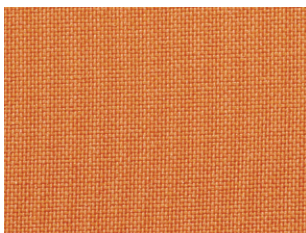
Waikiki Calippo



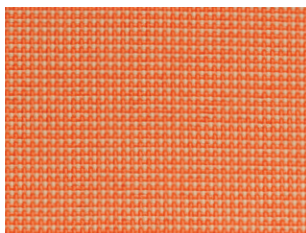
Seychelles Calippo



Mallacoota Melon



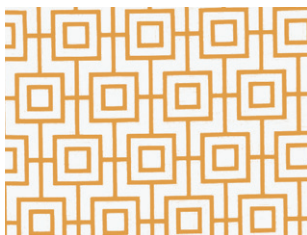
Kona Calippo



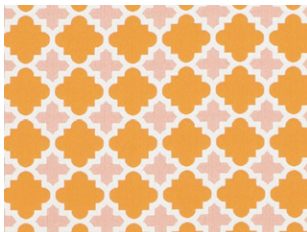
Noosa Melon



Bondi Calippo



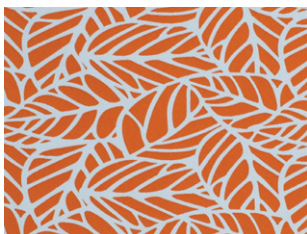
Bondi Calippo (Reverse)



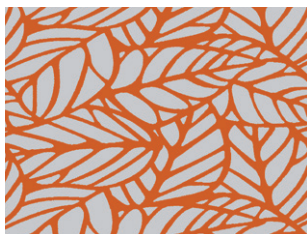
Bells Beach Calippo



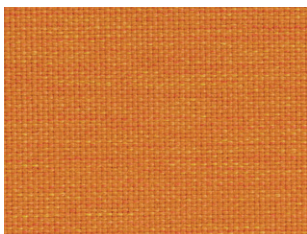
Bells Beach Calippo (Reverse)



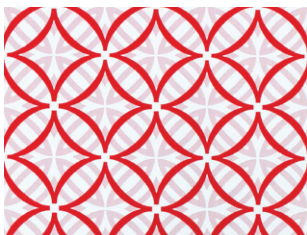
Tulum Melon



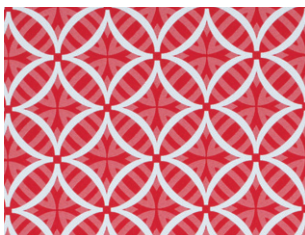
Tulum Melon (Reverse)



Lomani Calippo



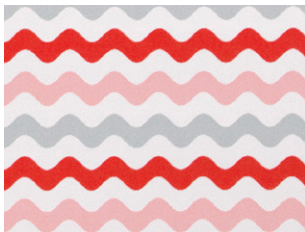
Coolum Lobster



Coolum Lobster (Reverse)



Avoca Lobster



Merimbula Lobster



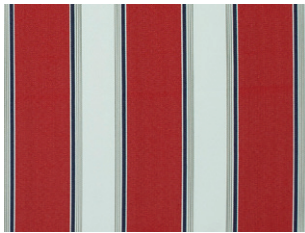
Mindill Marine



Seychelles Marine



Mindill Hibiscus



Waikiki Marine



Waikiki Hibiscus



Mallacoota Lobster





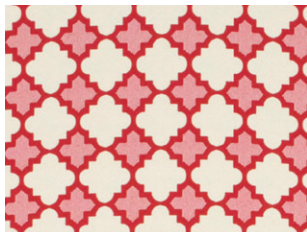
Bondi Hibiscus



Bondi Hibiscus (Reverse)



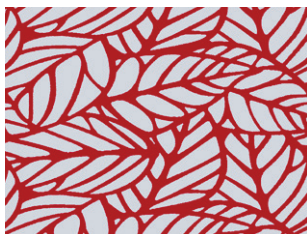
Bells Beach Hibiscus



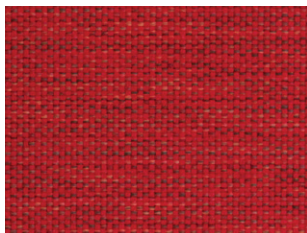
Bells Beach Hibiscus (Reverse)



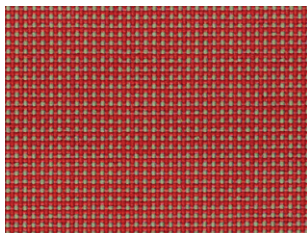
Tulum Lobster



Tulum Lobster (Reverse)



Lomani Hibiscus



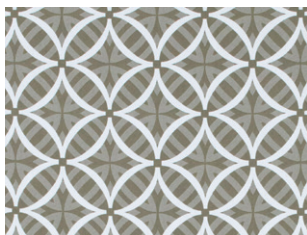
Noosa Lobster



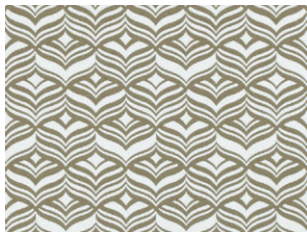
Kona Hibiscus



Coolum Stone



Coolum Stone (Reverse)



Avoca Stone



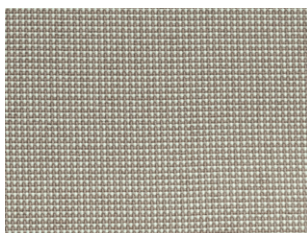
Merimbula Stone



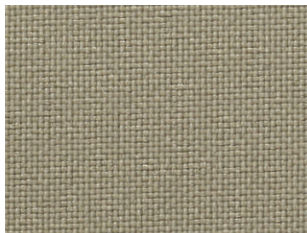
Waikiki Stone



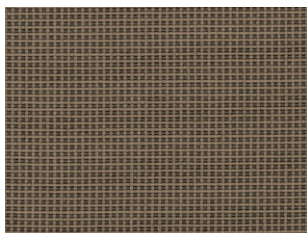
Mallacoota Stone



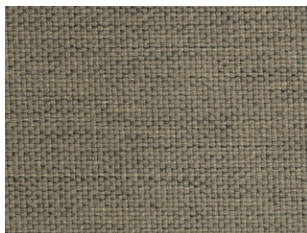
Noosa Stone



Kona Stone



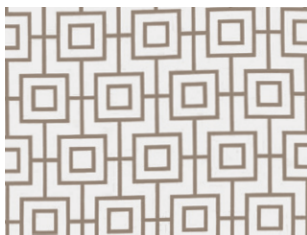
Noosa Shark



Lomani Stone



Bondi Stone



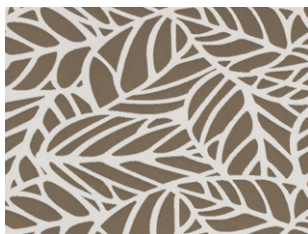
Bondi Stone (Reverse)



Bells Beach Stone



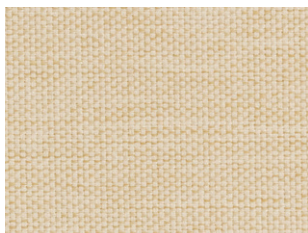
Bells Beach Stone (Reverse)



Tulum Stone



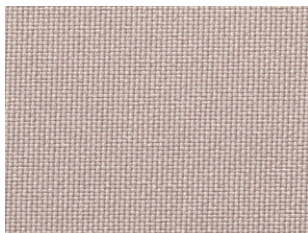
Tulum Stone (Reverse)



Lomani Shell

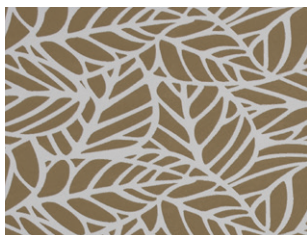


Kona Shell

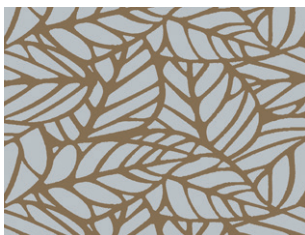


Kona Pumice





Tulum Sand



Tulum Sand (Reverse)



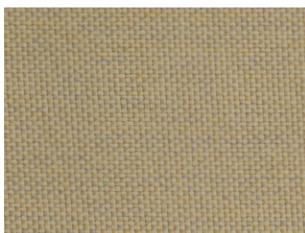
Mindill Stone



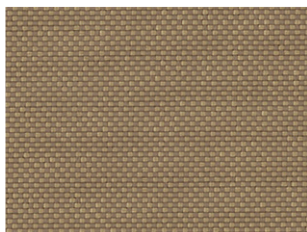
Seychelles Stone



Mallacoota Sand



Lomani Sand



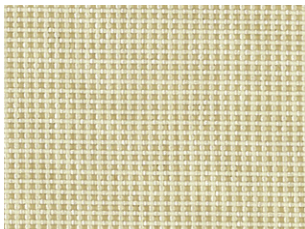
Noosa Sand



Kona Sand



Kona Tan



Noosa Shell





Tulum Pumice



Tulum Pumice (Reverse)



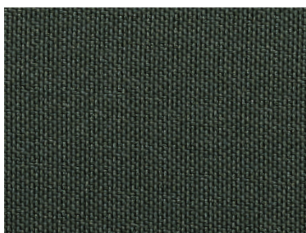
Mallacoota Pumice



Mallacoota Charcoal



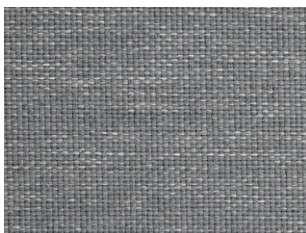
Waikiki Pebble



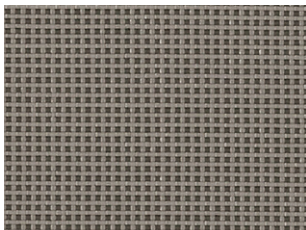
Kona Pebble



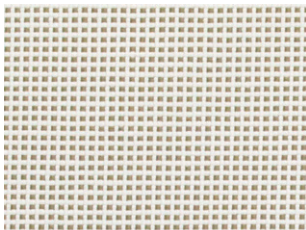
Lomani Pebble



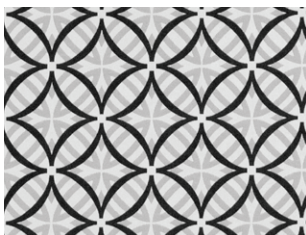
Lomani Pumice



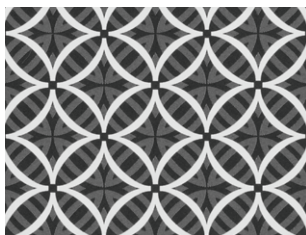
Noosa Pebble



Noosa Natural



Coolum Ash



Coolum Ash (Reverse)



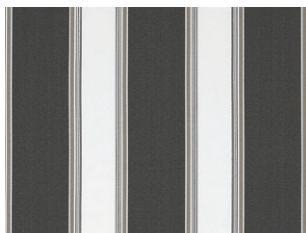
Avoca Ash



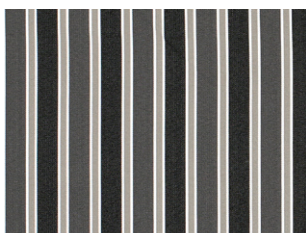
Merimbula Ash



Mindill Steel



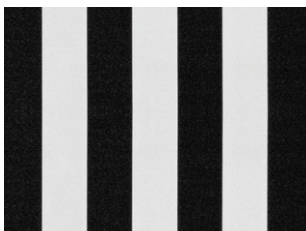
Waikiki Steel



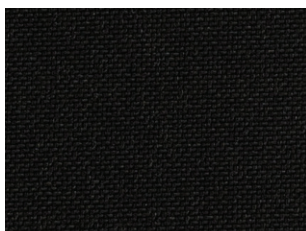
Seychelles Steel



Waikiki Ash



Mallacoota Ash



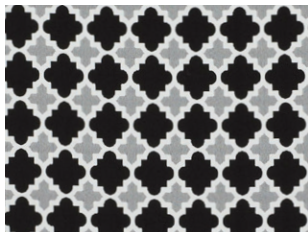
Kona Ash



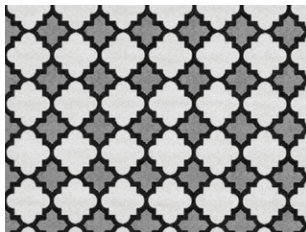
Bondi Ash



Bondi Ash (Reverse)



Bells Beach Ash



Bells Beach Ash (Reverse)



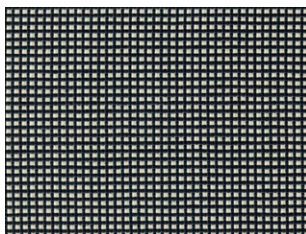
Tulum Ash



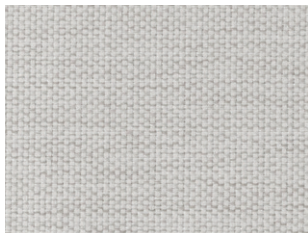
Tulum Ash (Reverse)



Lomani Ash



Noosa Ash



Lomani Cloud



Kona Cloud





**Chairs:** Mallacoota Lime

**Scatter cushions Left-Right:** Avoca Turquoise, Merimbula Stone, Merimbula Stone

**Scatter cushions on ground:** Merimbula Turquoise, Coolum Stone





e, Coolum Turquoise, Kona Turquoise, Avoca Stone

# Test Results

Specifications	Avoca	Bells Beach	Bondi
Brand	SUNDEC / Halo	SUNDEC / Halo	SUNDEC / Halo
Composition	100% Olefin	100% Olefin	100% Olefin
Pattern Repeat (cm)	H: 17.5 x V: 24	H: 7 x V: 7	H: 11.5 x V: 19
Railroaded	No	Yes	Yes
Width (cm)	140	140	140
Weight (gsm)	310	310	310
Origin	Non EU	Non EU	Non EU
Stain repellent	Fluro Chem	Fluro Chem	Fluro Chem
Durability			
Martindale (ISO 12947)	15,000 - 20,000	15,000 - 20,000	15,000 - 20,000
Usage	Drapery / General Domestic	Drapery / General Domestic	Drapery / General Domestic
Colourfastness			
To Light - Xenon Arc (ISO 105-B02)	>6	>6	>6
To Rubbing (ISO 105-X12)	Dry 4/5, Wet 4/5	Dry 4/5, Wet 4/5	Dry 4/5, Wet 4/5
To Shampoo (AS2111.19.2)	5	5	5
To Perspiration (ISO 105-E04)	5	5	5
To Water (ISO 105-E01)	5	5	5
To Dry Cleaning Solvent (ISO 105-D01:1993)	5	5	5
To Washing (ISO 105-C06,B1S)	5	5	5
To Seawater (ISO 105-E02:1994)	5	5	5
To Chlorinated water (ISO 105-E03:1994, 5mg/L)	5	5	5
Resistance to Mildew			
Resistance to Mildew (AATCC 30, Test III)	No fungal growth observed. Zone of inhibition: 44mm. Antifungal activity observed.		
Pilling			
Pilling (ISO 12945.2)	5	5	5
Seamslippage (ISO 13936.2)			
Warp	3.0	3.0	3.0
Weft	2.8	2.8	2.8
Dimensional chg launder (AS5077/ISO6330.7BA)			
Warp	-0.3	-0.3	-0.3
Weft	-0.2	-0.2	-0.2
Dimensional change to hanging (AS2663.1.B-1997)			
Warp	0	0	0
Weft	0	0	0
Free Formaldehyde			
Free Formaldehyde (ISO 14184-1:1998)	Not Detectable	Not Detectable	Not Detectable
Fire Hazard Properties (AS1530.3)			
Ignitability Index	13	13	13
Spread of Flame Index	0	0	0
Heat Evolved Index	2	2	2
Smoke Developed Index	2	2	2

Coolum	Kona	Lomani	Requirement
SUNDEC / Halo	SUNDEC / Halo	SUNDEC / Halo	
100% Olefin	100% Olefin	100% Olefin	
H: 17.5 x V: 17.5	Plain	Plain	
Multi	No	No	
140	140	150	
310	277	277	
Non EU	Non EU	Non EU	
Fluro Chem	Fluro Chem	Fluro Chem	
15,000 - 20,000	20,000 - 40,000	150,000	15,000-20,000
Drapery / General Domestic	Drapery / Heavy Dom / General Commercial	Drapery / Heavy Commercial	
>6	>7	>6	Minimum 5
Dry 4/5, Wet 4/5	Dry 5, Wet 5	Dry 4, Wet 5	Minimum Dry 4, Wet 4
5	5	5	Minimum 4
5	5	5	Minimum 4
5	5	5	Minimum 4
5	5	5	Minimum 4
5	5	5	Minimum 4
5	5	5	
5	5	5	
No fungal growth observed. Zone of inhibition: 44mm. Antifungal activity observed.			
5	5	5	Minimum 3/4
3.0	2.6	2.0	Under 6
2.8	2.8	2.0	Under 6
-0.3	-0.3	0.4	Maximum 5(++-)
-0.2	-0.1	0.3	Maximum 5(++-)
0	0	0	Maximum 2(++-)
0	0	0	Maximum 2(++-)
Not Detectable	Not Detectable	Not Detectable	Under 100ug/g
13	13	13	Range 0-20
0	0	0	Range 0-10
2	2	2	Range 0-10
2	2	2	Range 0-10

# Test Results

Specifications	Mallacoota	Merimbula	Mindill
Brand	SUNDEC / Halo	SUNDEC / Halo	SUNDEC / Halo
Composition	100% Olefin	100% Olefin	100% Olefin
Pattern Repeat (cm)	H: Stripe x V: 13	H: 6 x V: 16.5	H: 16.5 x V: Stripe
Railroaded	Yes	No	No
Width (cm)	140	140	150
Weight (gsm)	310	310	240
Origin	Non EU	Non EU	Non EU
Stain repellent	Fluro Chem	Fluro Chem	Fluro Chem
Durability			
Martindale (ISO 12947)	15,000 - 20,000	15,000 - 20,000	15,000 - 20,000
Usage	General Domestic	Drapery / General Domestic	Drapery / General Domestic
Colourfastness			
To Light - Xenon Arc (ISO 105-B02)	>6	>6	>6
To Rubbing (ISO 105-X12)	Dry 4/5, Wet 4/5	Dry 5, Wet 5	Dry 5, Wet 5
To Shampoo (AS2111.19.2)	5	5	5
To Perspiration (ISO 105-E04)	5	5	5
To Water (ISO 105-E01)	5	5	5
To Dry Cleaning Solvent (ISO 105-D01:1993)	5	5	5
To Washing (ISO 105-C06,B1S)	5	5	5
To Seawater (ISO 105-E02:1994)	5	5	5
To Chlorinated water (ISO 105-E03:1994, 5mg/L)	5	5	5
Resistance to Mildew			
Resistance to Mildew (AATCC 30, Test III)	No fungal growth observed. Zone of inhibition: 44mm. Antifungal activity observed.		
Pilling			
Pilling (ISO 12945.2)	5	5	5
Seamslippage (ISO 13936.2)			
Warp	3.0	3.8	3.9
Weft	2.8	3.7	2.0
Dimensional chg launder (AS5077/ISO6330.7BA)			
Warp	-0.3	0.0	-0.4
Weft	-0.2	0.0	0.0
Dimensional change to hanging (AS2663.1.B-1997)			
Warp	0	0	0
Weft	0	0	0
Free Formaldehyde			
Free Formaldehyde (ISO 14184-1:1998)	Not Detectable	Not Detectable	Not Detectable
Fire Hazard Properties (AS1530.3)			
Ignitability Index	13	13	12
Spread of Flame Index	0	0	0
Heat Evolved Index	2	2	2
Smoke Developed Index	2	2	3



Noosa	Seychelles	Tulum	Waikiki	Requirement
SUNDEC / Halo	SUNDEC / Halo	SUNDEC / Halo	SUNDEC / Halo	
100% Olefin	100% Olefin	100% Olefin	100% Olefin	
Plain	H: 7.5 x V: Stripe	H: 35 x V: 25	H:16.5 x V: Stripe	
Multi	No	No	No	
140	150	140	150	
277	240	310	240	
Non EU	Non EU	Non EU	Non EU	
Fluro Chem	Fluro Chem	Fluro Chem	Fluro Chem	

15,000 - 20,000	15,000 - 20,000	15,000 - 20,000	15,000 - 20,000	15,000-20,000
Drapery / General Domestic	Drapery / General Domestic	Drapery / General Domestic	Drapery / General Domestic	

>6	>6	>6	>6	Minimum 5
Dry 5, Wet 5	Dry 5, Wet 4/5	Dry 4/5, Wet 4/5	Dry 5, Wet 4/5	Minimum Dry 4, Wet 4
5	5	5	5	Minimum 4
5	5	5	5	Minimum 4
5	5	5	5	Minimum 4
5	5	5	5	Minimum 4
5	5	5	5	Minimum 4
5	5	5	5	
5	5	5	5	

No fungal growth observed. Zone of inhibition: 44mm. Antifungal activity observed.

5	5	5	5	Minimum 3/4
---	---	---	---	-------------

2.0	3.6	3	3.6	Under 6
2.0	2.1	2.8	2.1	Under 6

0.0	-0.4	-0.3	-0.4	Maximum 5(++-)
0.0	0.0	-0.2	0.0	Maximum 5(++-)

0	0	0	0	Maximum 2(++-)
0	0	0	0	Maximum 2(++-)

Not Detectable	Not Detectable	Not Detectable	Not Detectable	Under 100ug/g
----------------	----------------	----------------	----------------	---------------

13	12	13	12	Range 0-20
0	0	0	0	Range 0-10
2	2	2	2	Range 0-10
2	3	2	3	Range 0-10

# Care information

## Regular Care

Where possible store away from direct sunlight when not in use to prolong fabric life. Vacuum regularly using low suction. Rotate reversible cushions regularly. Please note a dirty surface promotes mildew growth, so please keep your fabrics clean.

## Cleaning

If cleaning with a hot-water extraction machine (hot). Do not remove cushion covers for separate cleaning even though they have zippers. Professional cleaning recommended. Use only upholstery detergent. Do not wet filling. Allow to naturally dry before re-use.

or

May be shampoo cleaned using upholstery shampoo only. Do not use dishwashing or laundry detergents. Do not wet filling. Do not scrub with stiff brush. Allow to naturally dry before re-use.

## Spot Cleaning

Treat spills and stains as soon as possible. Gently scrape soil or mop liquid from the surface of the fabric. Do not scrub. Apply proprietary cleaning agents strictly according to instructions to remove the residue of the spill. Do not saturate the fabric or interior with water or other cleaning liquids. May be spot cleaned with dry cleaning solvent.

## Washing Instructions

If your covers are too bulky for your machine we recommend professional washing by your local laundry. Use a gentle cycle and do not wash the fabric at a temperature exceeding 40 degrees. Use a washing agent that does not contain optical brighteners and which is suitable for colour retention such as Earth Choice (3 X Ultra concentrate liquid), or Eco Store Laundry Powder or Omo Colour.

Warning: Do not use washing agents containing any optical brighteners, as this may affect colour, particularly if cushions and main cover are not washed at the same time. Do not mix different colours or fabrics in the wash. Do not squeeze or wring by hand. Do not apply detergent directly to covers when washing. Covers with zippers do not necessarily mean that the covers are removable; once removed the covers may be difficult to replace depending on the style of furniture.

NOTE: Some minor colour change may occur in the initial washing stages. We recommend laundering or dry cleaning in complete cover sets to ensure there is no colour variation between cushions and main covers.

## Drying Instructions

To reduce risk of shrinkage, line drying only should be used. Do not line dry in direct sunlight as this may accelerate colour loss. Do not tumble dry. Ironing should not be necessary, but if required, iron on the reverse side using a low temperature.

## Bleach Cleaning/Disinfection

Mix 5% of household bleach (sodium hypochlorite) with 95% water (One 250mL cup of household bleach in 5L of water). Pre-test cleaning method on a hidden part of the furniture. The bleach solution can remain on the fabric surface for up to 10-minutes after which the bleach solution must be thoroughly rinsed from the fabric using a water extraction machine filled with cold water. Once thoroughly rinsed, extract any residual moisture and allow to dry at room temperature. Furniture must be dry before being reused.

WARNING: Sodium hypochlorite bleach is corrosive. Avoid contact with the skin. Use PVC gloves and follow the safety instructions of the bleach manufacturer. Please also be mindful not to apply the bleach solution to the frame of the furniture or any floor coverings without further testing.



# WARWICK

## Guarantee

Since 1966 Warwick have supplied fine furnishing fabrics which have been quality tested to world standards for performance, durability and safety.

For a period of three years, for both domestic and commercial applications, we guarantee to replace any fabric which is found to be faulty as a result of manufacturing defect and which has been used in accordance with our performance ratings and care instructions.

The Warwick Quality Guarantee is additional to all statutory rights and remedies that are available to our customers under Australian Consumer Law.

In the event of any fabric claim Warwick customers will be provided with a comprehensive service form to be completed and returned to Warwick to facilitate prompt processing.

Full terms and conditions of the Warwick Quality Guarantee are available upon request. Please email [info@warwick.com.au](mailto:info@warwick.com.au) or fax 03 9416 1060.

### **Australia**

T 1300 787 888  
[toll free in Australia]  
F +61 (0) 3 9415 7236  
F +61 (0) 3 9416 1060  
[info@warwick.com.au](mailto:info@warwick.com.au)  
[www.warwick.com.au](http://www.warwick.com.au)

### **New Zealand**

T +64 (0) 9 477 3080  
F +64 (0) 9 479 6313  
[info@warwick.co.nz](mailto:info@warwick.co.nz)  
[www.warwick.co.nz](http://www.warwick.co.nz)

### **United Kingdom**

T +44 (0) 1451 822 383  
F +44 (0) 1451 822 369  
[info@warwick.co.uk](mailto:info@warwick.co.uk)  
[www.warwick.co.uk](http://www.warwick.co.uk)

